



**REGISTRAR
of VOTERS**

Community Election Working Group

August 31, 2022



Housekeeping

- Meeting is being recorded
- Please mute yourself unless speaking or presenting
- Pause for questions
- May submit questions and comments in chat or raise hand



Welcome & Introductions

- Lucinda Williams, Chair
- Bob Page, Registrar of Voters
- Registrar of Voters Staff
- CEW member roll call



Agenda

- Approve minutes of April 13, 2022 CEW meeting
- Open Forum
- June 7, 2022 Statewide Direct Primary Election Recap
- November 8, 2022 General Election Planning
- Updates from VAAC and LAAC
- Future Business Items



Open Forum



2022 Statewide Direct Primary Election Recap



Orange County Elections are...

- Accessible
- Fair
- Accurate
- Secure
- Transparent





2022 Primary Election

- Ballots mailed to 1.8 million active registered voters
- 181 Vote Centers
- 36 Drive-Thru Drop Off Locations
- 5 Pop-Up Voting Events
- 120 Drop Boxes





2022 Primary Election - Community Outreach

- 75 events completed
 - Virtual speaking engagements and virtual conferences
- Provided outreach materials to 16 community events



2022 Primary Election - Community Outreach



- Two postcards to all voters
- County Voter Information Guide
- Press releases
- Five electronic newsletters
- Website and social media postings




ORANGE COUNTY ELECTIONS NEWSLETTER

Home | Voting | Results | About

Post-Election Audits

Following each election, we conduct multiple post-election voting system tests and audits as part of a comprehensive election integrity program that goes beyond what is required by California law to ensure election results are accurate. The program includes running about 400 test ballots through every piece of ballot scanning equipment used in the election to re-test their accuracy. The same test was conducted before the election. We also use two methods to randomly select ballots to manually count to compare to the vote tally from the County's voting system software and scanners. The random selection of ballots occurred last week. The ballots are being pulled this week for manual counting next week. To learn more about these audits visit: [Post-Election Audits](#)



A photograph showing a large room with tables and equipment, likely a ballot preparation area. A sign in the foreground reads "BALLOT PREPARATION".



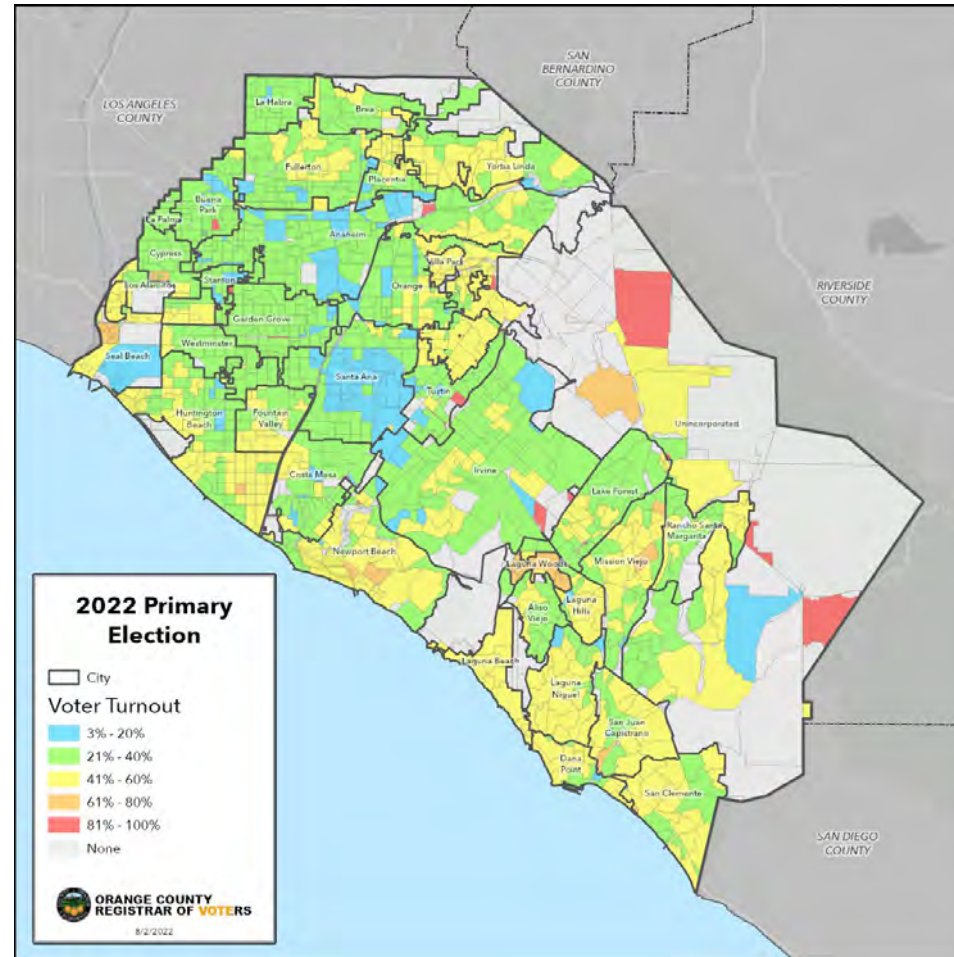
June 2022 Primary – Turnout

- 1,809,773 registered voters
- 35.2% voter turnout
- 636,497 ballots cast
 - 564,042 ballots cast by mail
 - 72,455 ballots cast in person



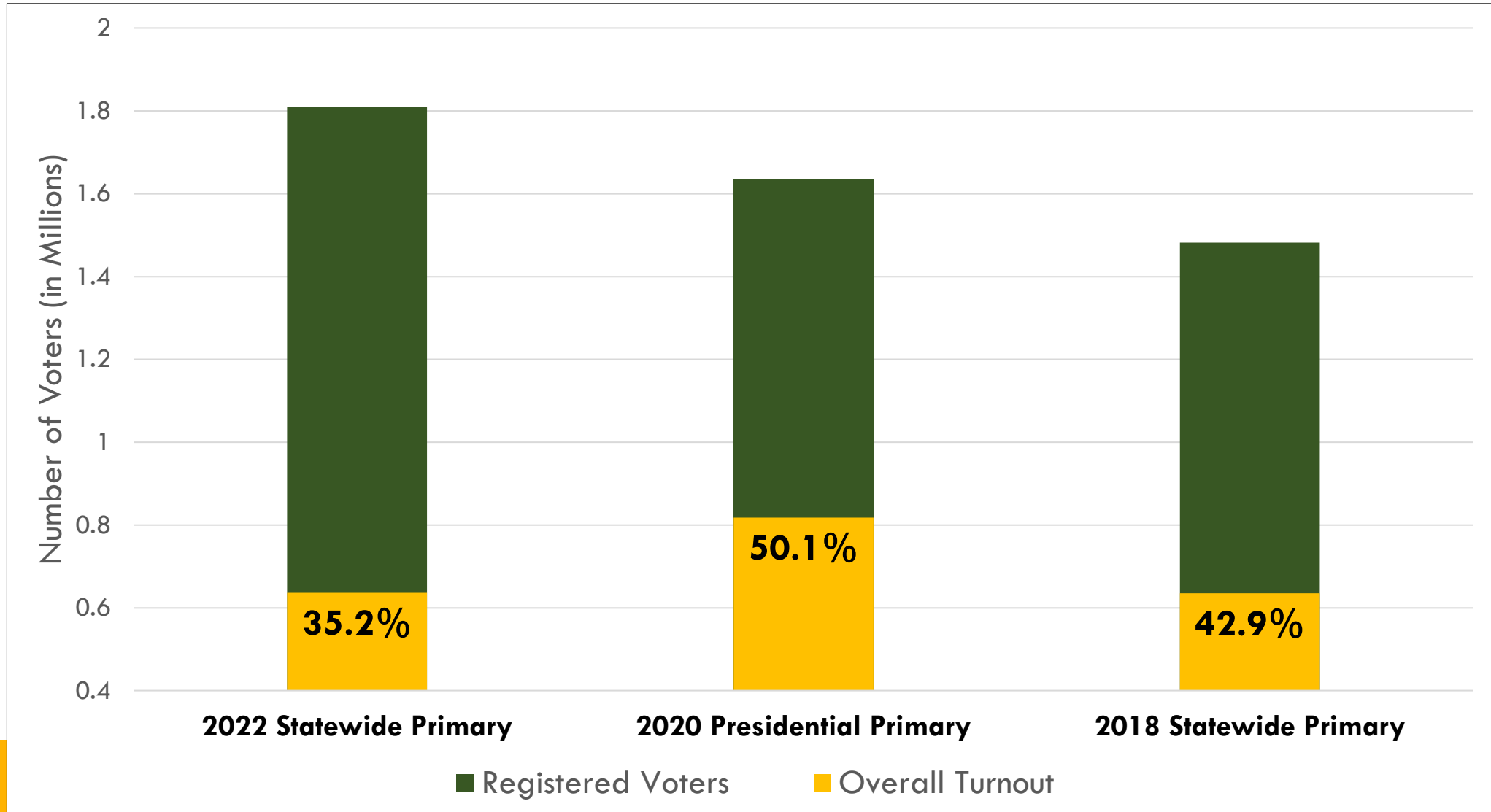


Voter Participation in Orange County



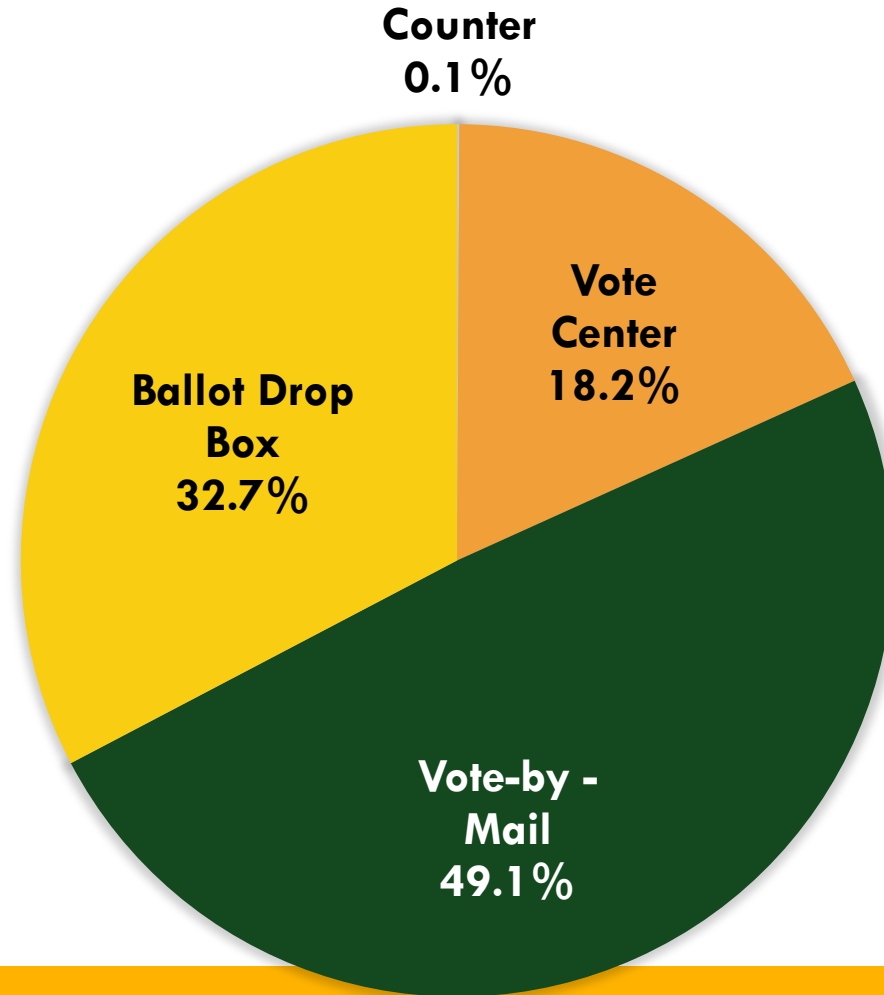


June 2022 Primary – Overall Turnout



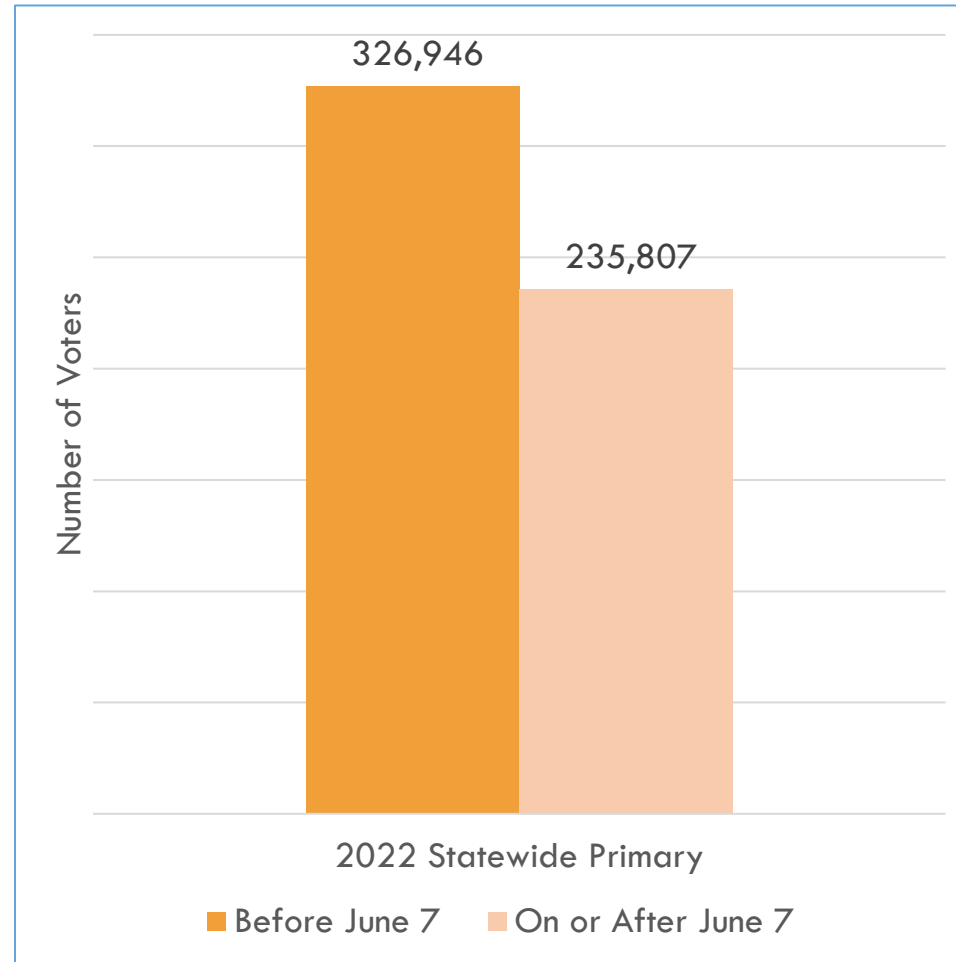


June 2022 Primary – VBM Return Method



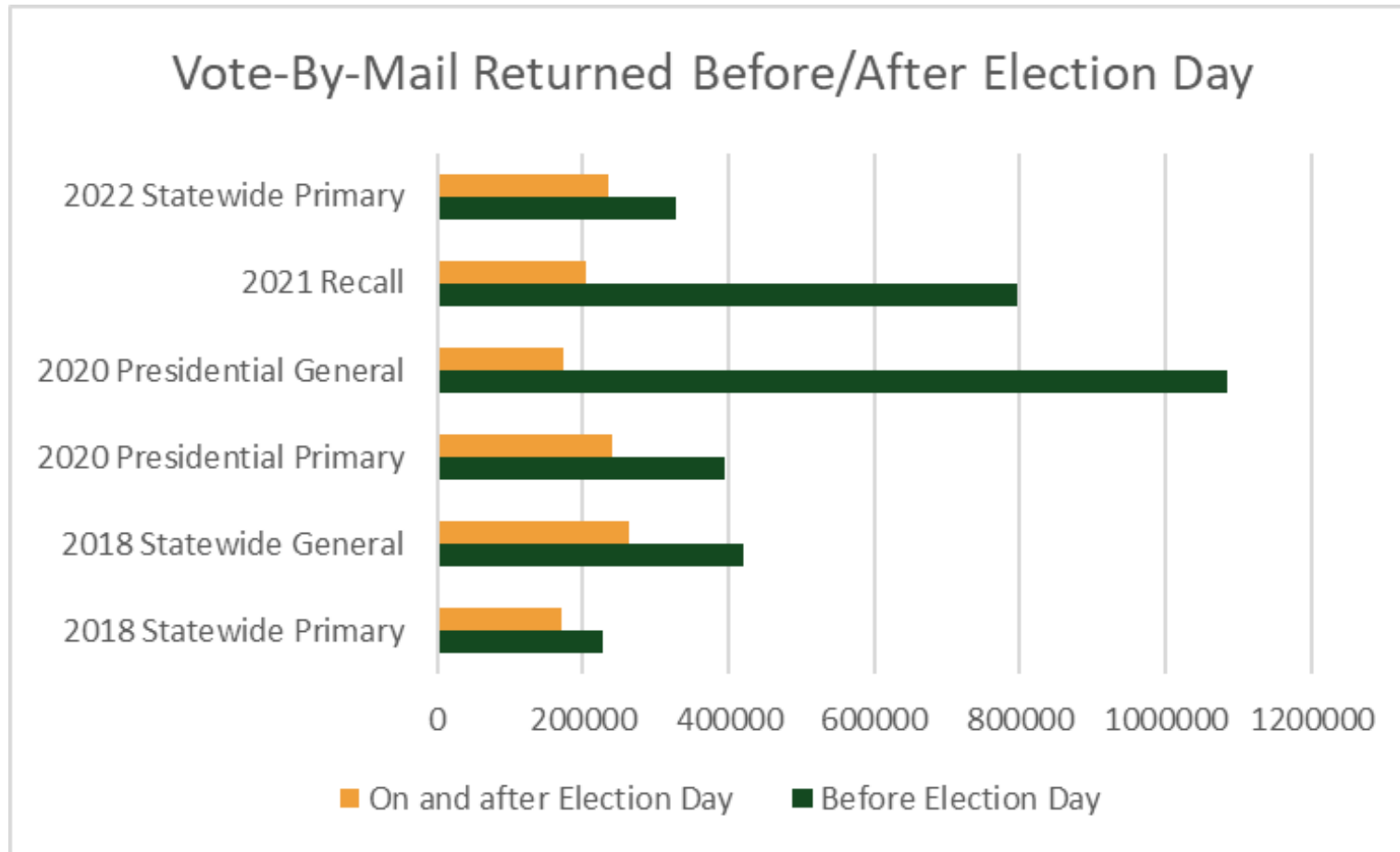


Vote-by-Mail Returned Before/After Election Day



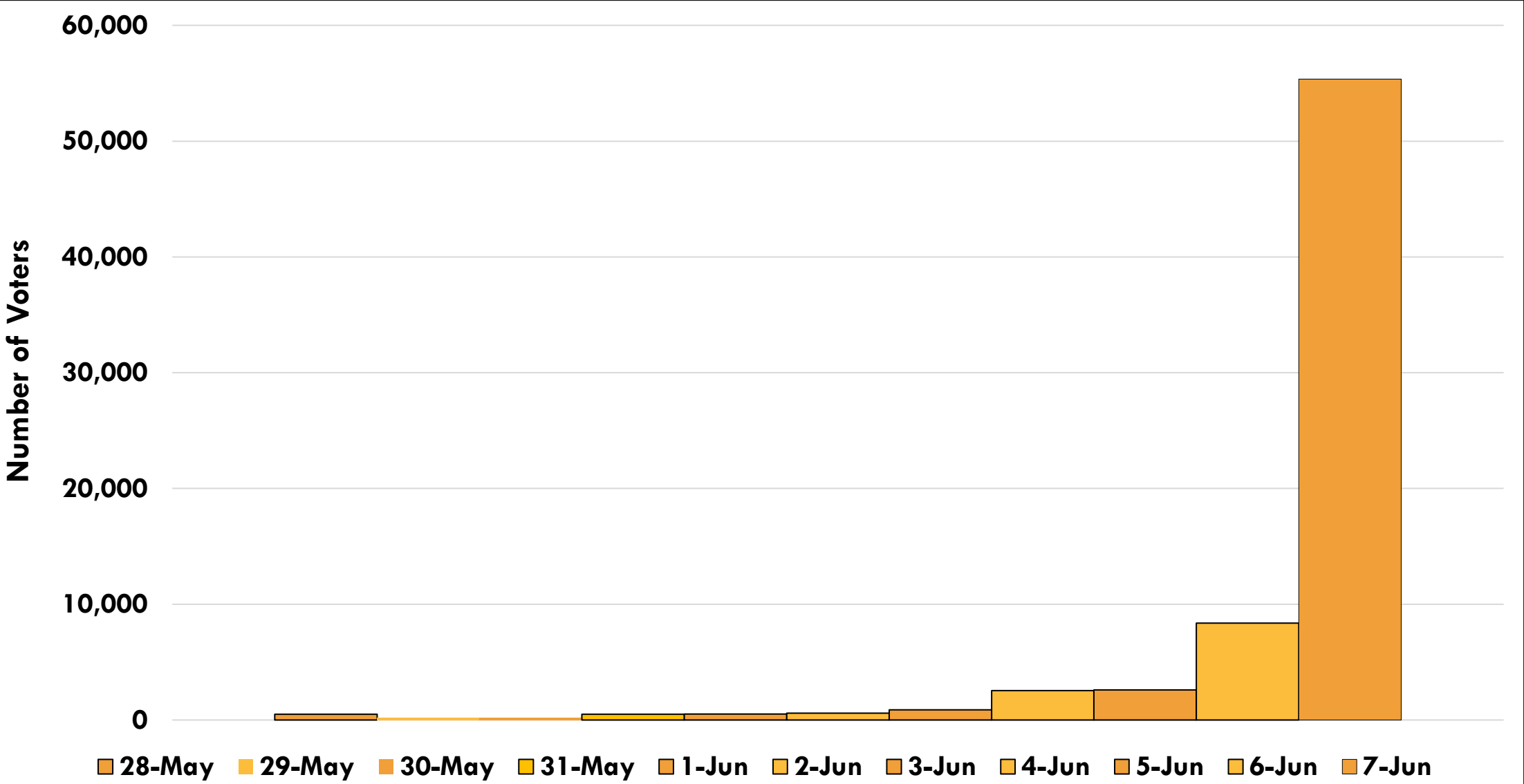


Vote-by-Mail Returned Before/After Election Day



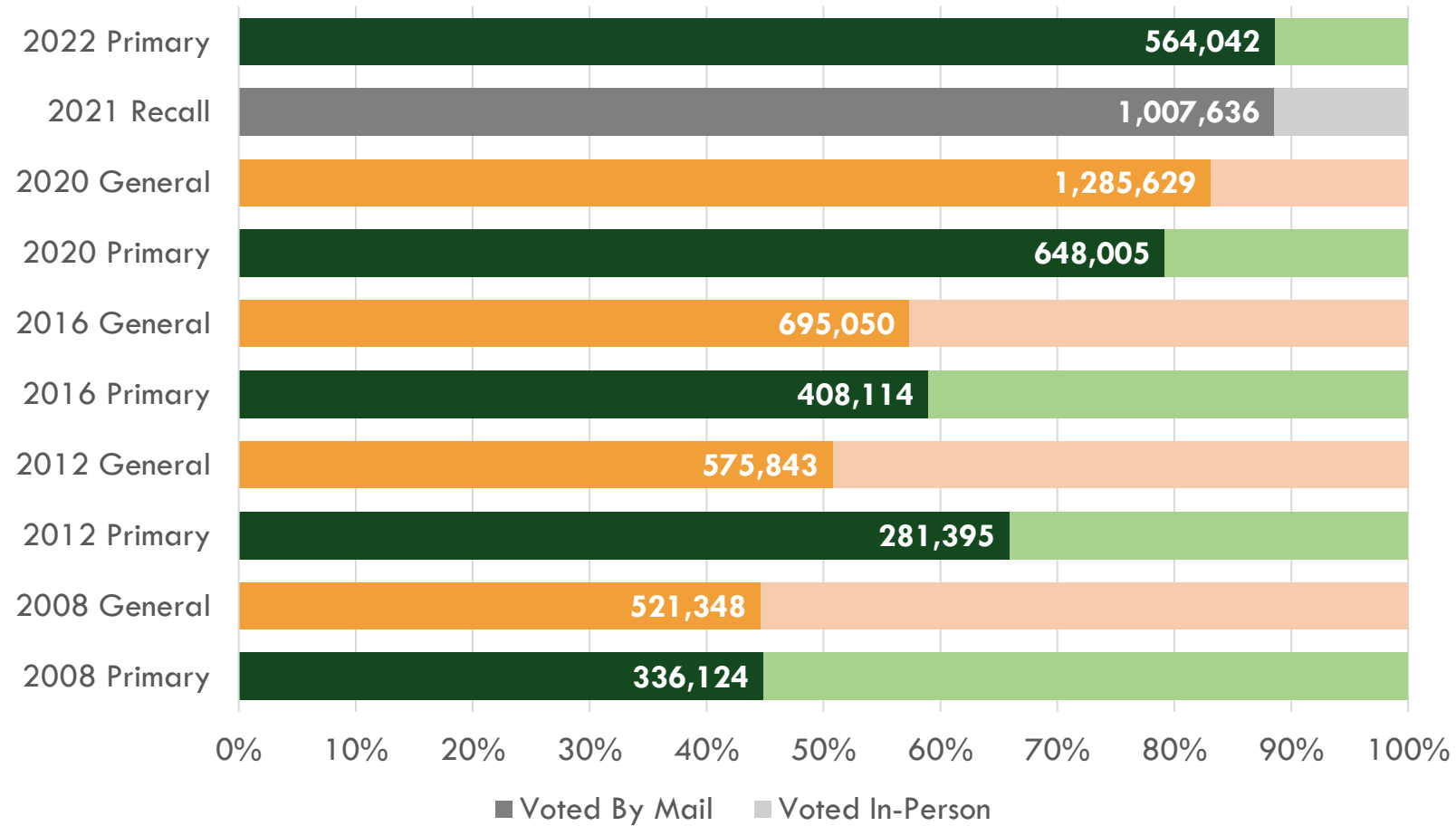


June 2022 Primary – In-Person by Date





Vote-By-Mail vs. Vote Center Participation





Ballot Drop Box Pilot Program

- Additional ballot tracking technology using a BoxLock Scanning Devices
- 9 ballot drop boxes
- 33,845 voters dropped their ballot at a BDB with a scanner
- 867 (2.56%) ballots were successfully scanned in
- Ended pilot program due to usability issues



November 2022 General Election Planning



2022 General Election

What's on the Ballot?

- Top two runoff elections for federal, state, one Superior Court Judge and three County Board of Supervisors offices
- State Supreme Court and Court of Appeal Associate Justices
- 73 city offices
- 63 school and special district offices



2022 General Election

What's on the Ballot?

- 543 unique ballot styles
- 186 total candidate contests
- 20 local measures
- 7 Statewide Propositions



2022 General Election - Planning



- 181 Vote Centers required
 - 37 11-Days
 - 144 4-Days
- 121 Ballot Drop Boxes
- 5 Pop-Up Voting Events



2022 General Election - Important Dates

- Secretary of State issues certified candidate list – September 1
- Issue overseas and military voter ballots – September 9 to 24
- Start mailing County Voter Information Guide – September 29
- Mail ballots to active registered voters – October 10
- Registration Deadline – October 24
- Vote Centers open – October 29
- Voting Deadline – November 8 at 8 p.m.



2022 General Election – Focus Areas

- Marketing of extra help position recruitment
- Expand de-escalation training for Vote Center staff
- Voter Education Program
- Improve support of observers
- Evaluate Vote Center usage and hours



Community Outreach Toolkits

- In the process of creating our toolkits.
- Contain accurate and helpful information and resources.
- Provide our community partners and media with easy-to-share content.



Security and Integrity Measures

- All votes are cast on paper ballots
- Vote tally system is not connected to the internet
- Pre-election & post-election Logic and Accuracy tests
- 1% Manual Tally
- Risk Limiting Audit (RLA)
- Pre-election & post-election software version confirmation with SOS



Security and Integrity Measures

- Electronic check-in with real-time updates
- Controlled chain of custody
- Command Center
- Rapid deployment teams
- Partnership - Law enforcement & District Attorney's office
- Partnership – Department of Homeland Security



Security and Integrity Measures

Ballot Drop Boxes

- Made of military grade metal
- Ballot pick-up (teams of 2)
- Daily randomized routes, chain of custody, GPS tracking, radio communication

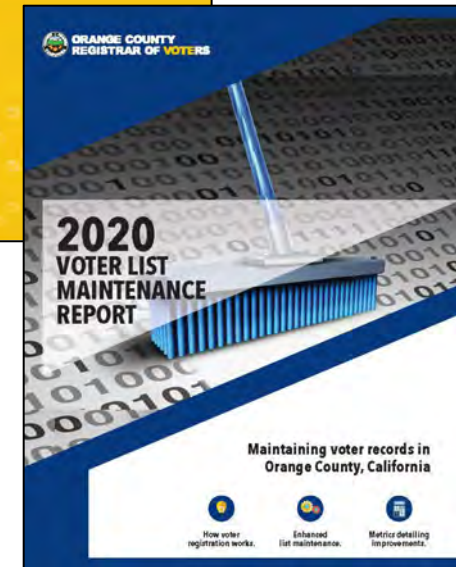
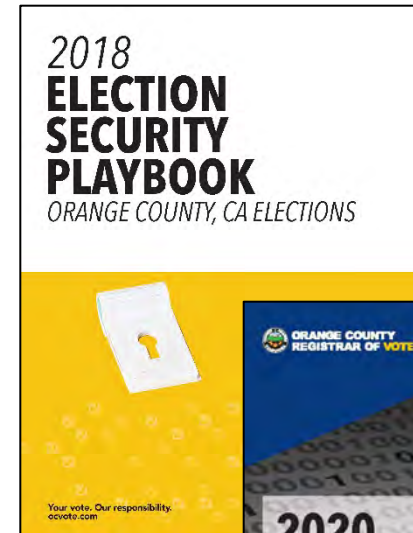




Security and Integrity Measures

Security focused reports available on our website: ocvote.gov/election-library

- Election Security Handbook
- CalTech List Maintenance
- Grand Jury Findings



CEW VAAC and CEW LAAC Updates



Future Business Items





Next Meeting Date

- TBD





**THANK
YOU!**

